



Poultry business is tough.  
But **probiotic** decisions  
should be **easy**.

**CHR HANSEN**  
*Improving food & health*

**GalliPro® Fit**  
The easy choice.

## GalliPro® Fit

### Selected triple strain probiotic to:

- Boost prevention programs
- Contribute to food safety
- Bring profitability

Distributor:  
**Elanco Denmark ApS**  
[www.elanco.dk](http://www.elanco.dk)

**CHR HANSEN**

*Improving food & health*

©2023 Elanco or its affiliates. PM-DK-23-0237 12/2023

**Elanco**

## WHAT IS GALLIPRO® FIT

**GALLIPRO® Fit** is the selected triple strain poultry **probiotic to boost prevention programs** and contribute to **food safety** delivering **profitability**.

**GALLIPRO® Fit** contains three carefully selected, naturally-occurring strains.

### *Bacillus subtilis* (DSM32325)

- Inhibits gram negative and positive bacteria
- Modulates Immune system

### *Bacillus subtilis* (DSM32324)

- Inhibits gram negative and positive bacteria
- Improves protein availability

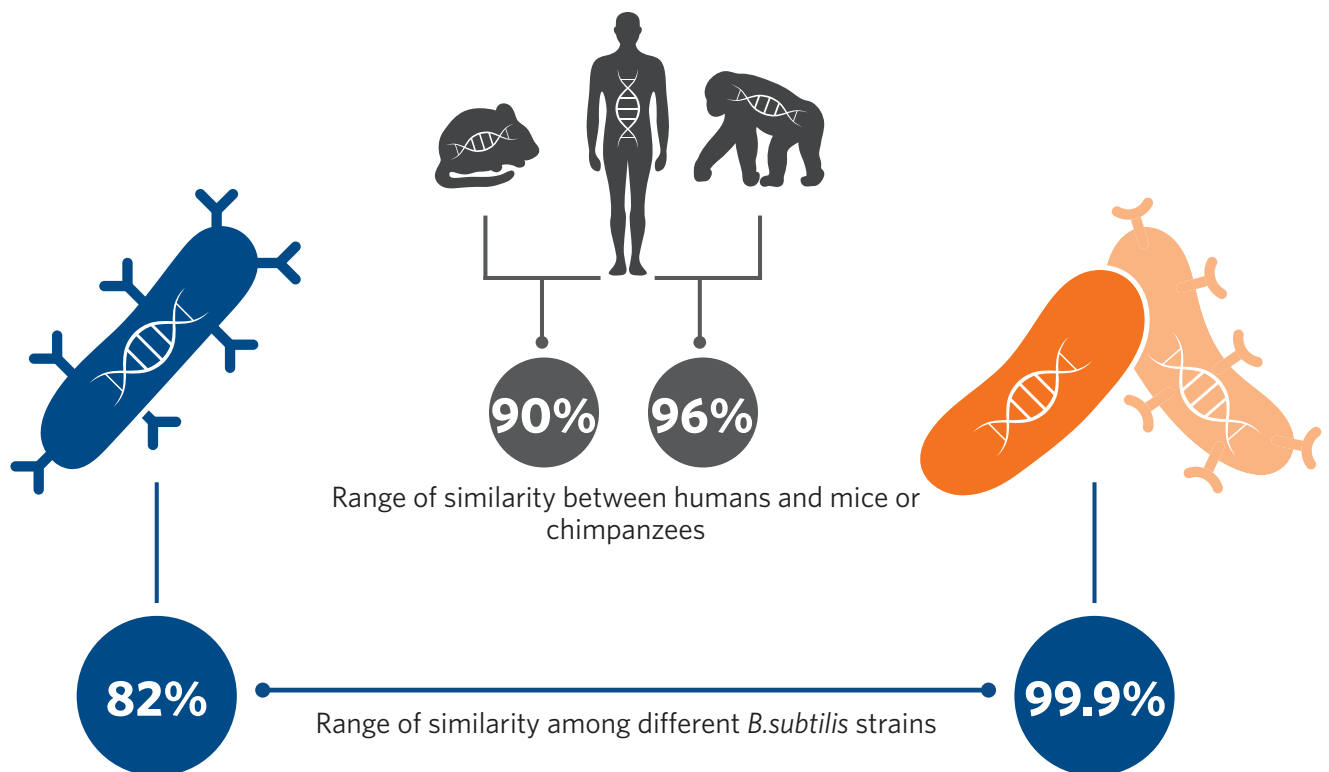
### *Bacillus amyloliquefaciens* (DSM25840)

- Improves energy availability
- Improves protein availability

They were selected specifically for their ability to inhibit the proliferation of pathogenic organisms and for their ability to improve digestibility of feed.

## STRAINS MATTER

Why it is important to select the "right" *Bacillus*?

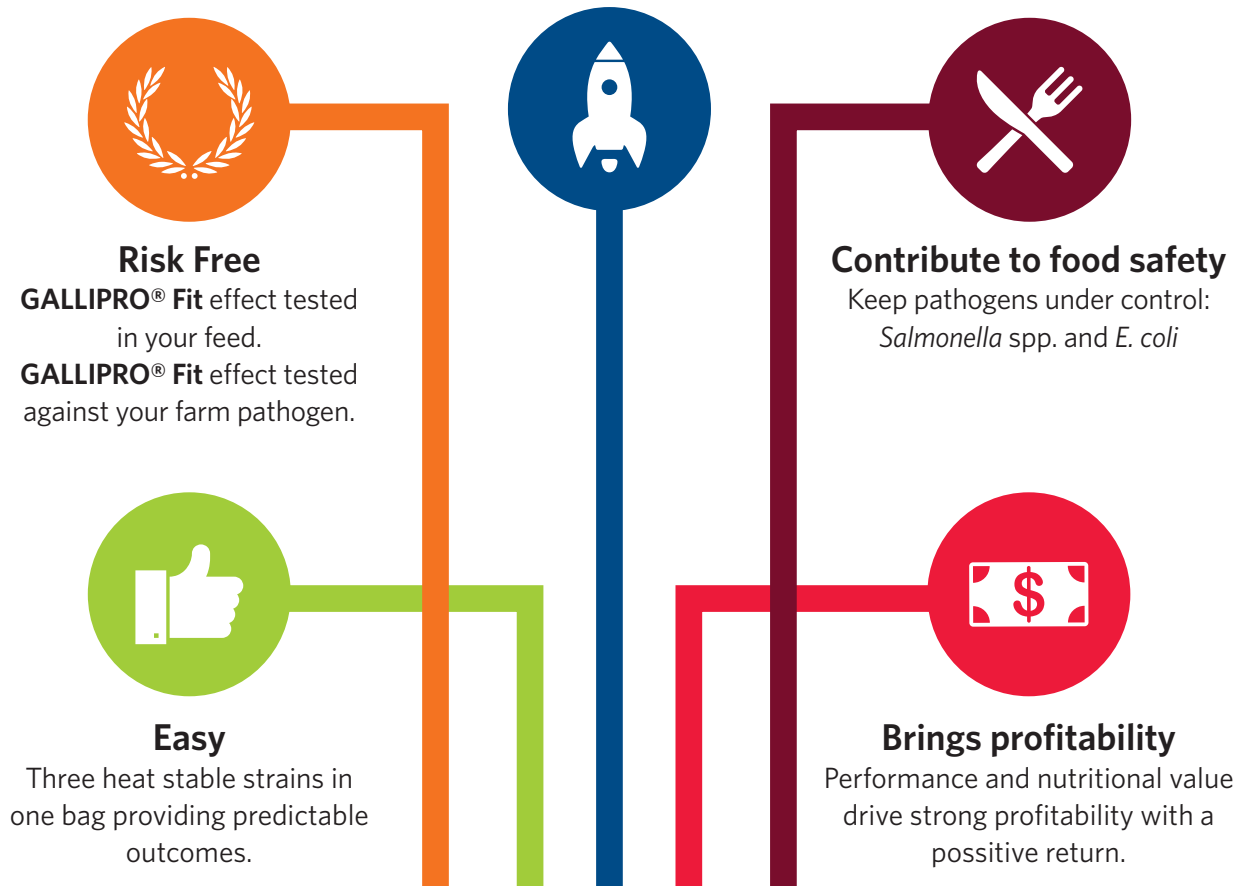


*Bacillus subtilis* species have more than 1,000 strains recorded in international strain banks. Selecting and differentiating strains matters greatly for the health and food industries as different strains have unique properties. There is huge difference between strains in e.g enzyme production, inhibition of pathogenic bacteria abilities, germination etc.

# GALLIPRO® Fit 5 STREAMS OF VALUES

## Boost prevention programs

Modulate the immune system and prevent necrotic enteritis.



**Application:** GALLIPRO® Fit should be added at a rate of 500g to 1 ton of feed, providing a  $1.6 \times 10^6$  CFU/g of feed, and should be administered to flocks from Day 1 until slaughter. Alternatively can be added to starter and grower feed, and follow up by GALLIPRO® for finisher feed.



- Can be used in premix, mash and/or pelleted feed
- Stable through the pelleting process
- Compatible with coccidiostats

FOR MORE INFORMATION GO TO [WWW.CHR-HANSEN.COM/POULTRYEXPERTS](http://WWW.CHR-HANSEN.COM/POULTRYEXPERTS)

Distributed by: Elanco Animal health

## GET TO KNOW CHR. HANSEN

Global bioscience company with Danish roots. Our products are based on nature's own resources.

"Our purpose is to deliver natural innovative solutions that address global challenges by advancing food, health and productivity"

### NATURE'S NO. 1™- Sustainably

At Chr. Hansen, our more than 3,150 employees are passionate about improving food and health, and it is this passion that drives our ambition to be no. 1 in everything we do. Nature's no. 1™ is about using nature's own resources to improve food and health, and we do that in a sustainable way. 82% of Chr. Hansen's revenue contributes directly to the UN Global Goals.

## FUN FACTS

# 1 BILLION

More than **1 billion** people consume products containing our natural ingredients every day.

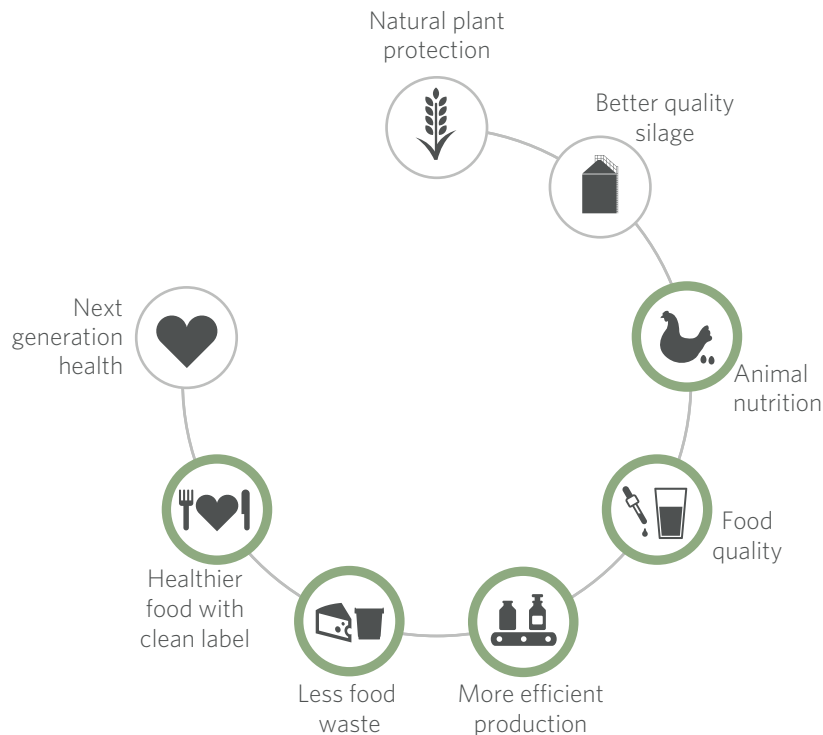
# 50%

Every second cheese in the world contains at least one of our natural ingredients.

# 40 000

We have one of the world's largest commercial collections of bacteria, numbering almost **40 000** strains.

With our poultry probiotic range we contribute to most of the parts of animal protein delivery chain.



GALLIPRO® Fit is a trademark of Chr. Hansen A/S

FOR MORE INFORMATION GO TO [WWW.CHR-HANSEN.COM/POULTRYEXPERTS](http://WWW.CHR-HANSEN.COM/POULTRYEXPERTS)

Distributed by: Elanco Animal health