

Elanco™

MAKE THE
INVISIBLE



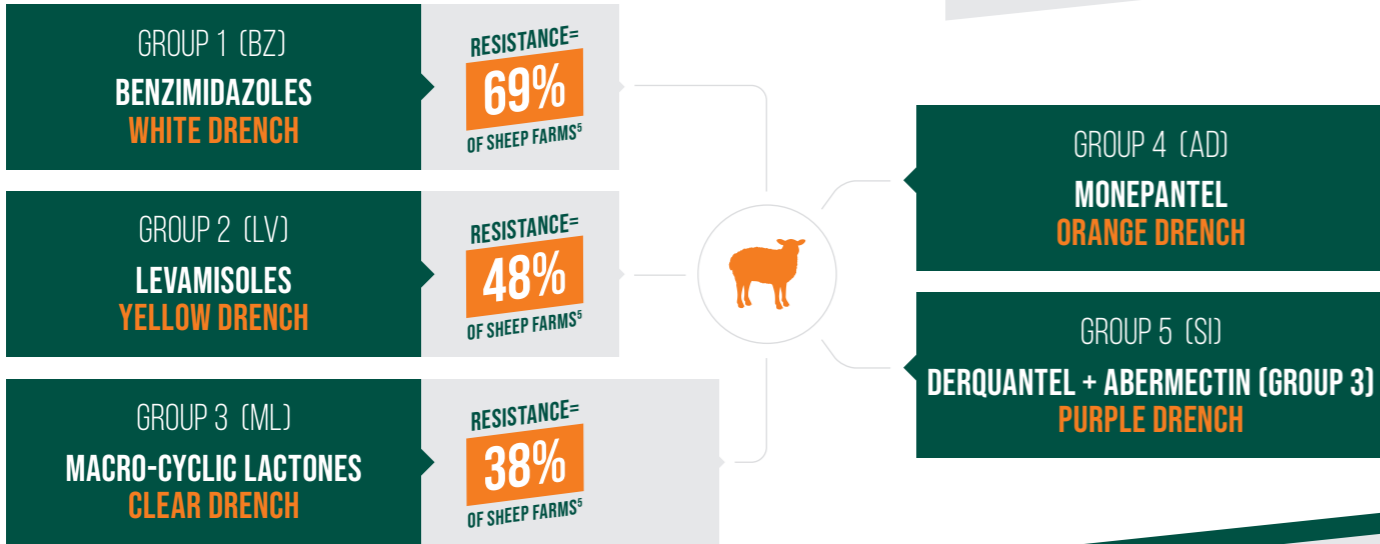
PRESCRIBER INFOGRAPHIC





HELP YOUR CUSTOMERS **WAKE UP TO WORM RESISTANCE**
TO STOP IT BECOMING A NIGHTMARE ON THEIR FARMS
by advising the following worming **DOs** and **DON'Ts**...

THE MAJORITY OF YOUR CUSTOMERS WILL HAVE WORMER RESISTANCE ON THEIR FARM – YOU ARE KEY TO HELPING THEM WAKE UP TO THIS

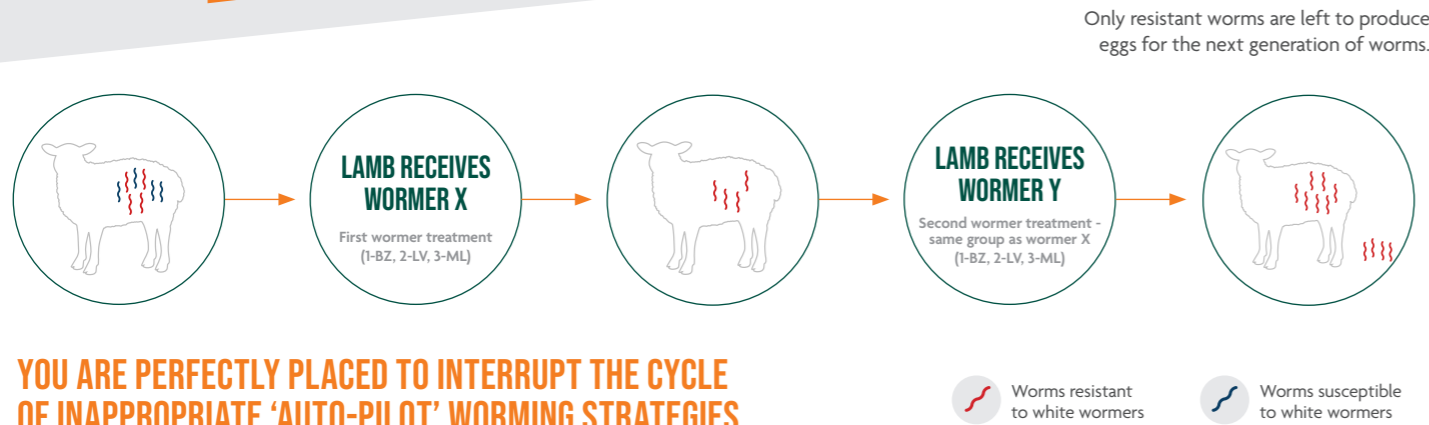


HOW TO IDENTIFY THE CUSTOMERS THAT ARE SLEEPWALKING INTO WORMER RESISTANCE:

- Asks for worming product in bulk (more than is needed for one dose for their flock)
 - WARNING SIGN of intention to use the same wormer repeatedly, encouraging resistance
- Timed orders (e.g. every 6 weeks)
 - WARNING SIGN of worming by the calendar, not when needed, encouraging resistance
- Always buys the same wormer group (not necessarily the same wormer product)
 - WARNING SIGN that the customer doesn't understand that different products can be in the same wormer group, encouraging resistance

MAKE IT YOUR MISSION TO HAVE A DISCUSSION ABOUT WORMING STRATEGIES WITH CUSTOMERS SHOWING THESE WARNING SIGNS

EYE OPENER
RESISTANCE IS COMMON. IF THE SAME WORMER GROUP IS USED REPEATEDLY, RESISTANT WORMS WILL BUILD UP OVER THE SEASON.



YOU ARE PERFECTLY PLACED TO INTERRUPT THE CYCLE OF INAPPROPRIATE 'AUTO-PILOT' WORMING STRATEGIES BY EDUCATING YOUR CUSTOMERS

EYE OPENER
RESISTANCE COSTS YOU MONEY – EVEN BEFORE YOU CAN SEE THE EFFECTS

50% DECREASE IN GROWTH RATES BEFORE CLINICAL SIGNS ARE SEEN²

- 2.8kg difference in liveweight gain³ (equivalent of €10.07⁴)
- 14% reduction in carcass value³ compared to when a fully effective wormer is used.

Show your value to customers by proactively advising how they can save money with the correct worming strategy.

DON'T USE THE SAME WORMER GROUP REPEATEDLY

→ It will be ineffective against resistant worms left behind from the last treatment

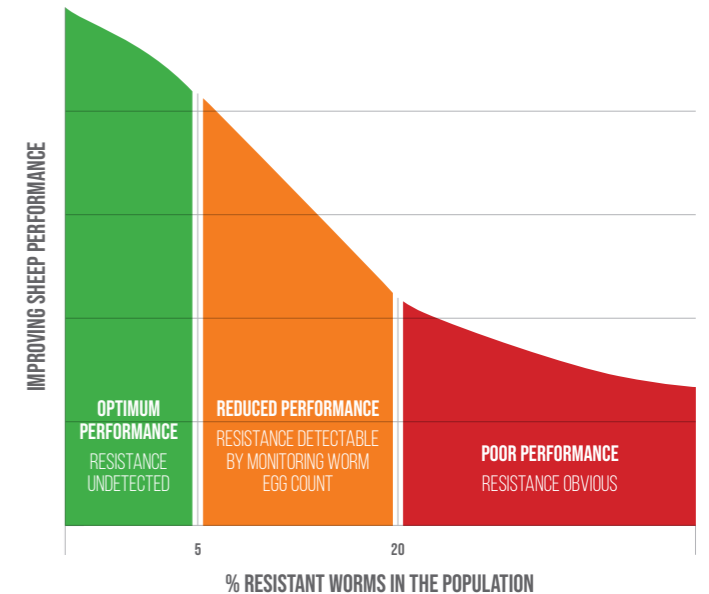
DON'T WAIT UNTIL RESISTANCE IS A VISIBLE PROBLEM BEFORE CHANGING YOUR WORMING APPROACH

→ By the time the effects of resistance can be seen on a farm, losses of up to 50% reduction in growth rates have already occurred.²

→ The longer resistance goes unchecked, the larger and more resilient the resistant worm population becomes. Once established, wormer resistance can't be reversed.²

DON'T DOSE AND MOVE

→ Waiting a few days after treatment before moving is important to stop ONLY resistant worms contaminating the clean pasture



FIND OUT MORE ABOUT ANTHELMINTIC RESISTANCE HERE.





WORM STRATEGICALLY

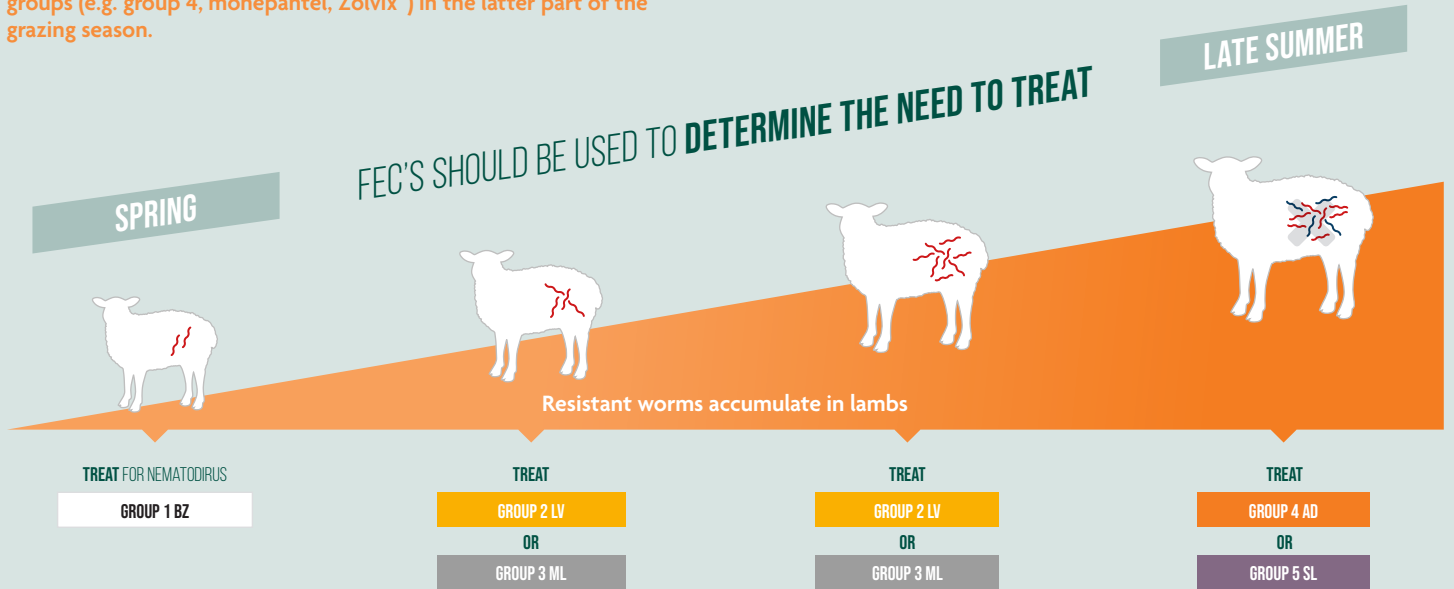
Worm lambs, when needed, with either a group 1BZ, 2LV, 3ML wormer.

Replace one dose of your current wormer with one of the newer groups (e.g. group 4, monepantel, Zolvix™) in the latter part of the grazing season.

ONLY DOSE WHEN THEY NEED IT

The development of wormer resistance is sped up by increasing treatment frequency. The earlier that dosing of a group/flock starts, the greater the number of doses that may be given, speeding up the rate of development of resistance.

Ideally use SCOPS Nematodirus Forecast and faecal egg count (FEC) to determine dose timing



A break dose with Zolvix removes worms left behind by previous treatments, allowing lambs to reach their growth potential and make the most of late season grazing.



GIVE AN EFFECTIVE QUARANTINE TREATMENT FOR NEW AND INCOMING ANIMALS

Worm all new arrivals with one of the newer groups (e.g. group 4, monepantel, Zolvix™)

Yard/house these animals for at least 2 days before turning out onto pasture that has carried sheep this season.



WEIGH SHEEP AND CALIBRATE EQUIPMENT BEFORE DOSING

Under-dosing drives resistance development

➔ Some worms may be part resistant/part susceptible to a wormer, underdosing may not kill all of these worms. They will survive (as will fully resistant worms) meaning the percentage of resistant worms increases.

DON'T LET YOUR CUSTOMERS SLEEPWALK INTO THE PROBLEM OF WORM RESISTANCE – BY INCORPORATING ZOLVIX IN EVERY FLOCK, EVERY YEAR IN LAMBS, AND FOR ROUTINE QUARANTINE TREATMENTS FOR ALL INCOMING SHEEP, YOU CAN HELP THEM REDUCE THE RISK.



References: 1. Wales Against Anthelmintic Resistance Development (WAARD). July 2015. 2. SCOPS manual <http://www.scops.org.uk/vets-manual.html>. 3. Sutherland et al The production costs of anthelmintic resistance in sheep managed within a monthly preventative drench program, AgResearch Ltd, The Hopkin Institute and Novartis Animal Health. 4. AHDB SQQ 323.4p/kg as of 26th May 2021. £9.05 X exchange rate. 5. Teagasc: Addressing anthelmintic resistance <https://www.youtube.com/watch?v=gQDaKmqtIA>

For further information call Elanco Animal Health on +44 (0) 1256 353131 or write to Elanco UK AH Limited, Form 2, Bartley Way, Bartley Wood Business Park, Hook RG27 9XA. ZOLVIX™ 25 mg/ml oral solution for sheep contains monepantel. Legal category: **POM in E**. Information regarding the side effects, precautions, warnings and contra-indications can be found in product packaging and leaflets; further information can also be found in the Summary of Product Characteristics. Advice should be sought from the medicine prescriber. Zolvix, Elanco and the diagonal bar logo are trademarks of Elanco or its affiliates.

Use medicines responsibly (APHA.ie). © 2022 Elanco or its affiliates. PM-IE-22-0240. Date of Preparation: August 2022

For further information and advice on worm resistance please visit:

www.myelanco.co.uk/web/ireland-ruminant