



STOP LYME

BEFORE IT STARTS.

LYME FACEBOOK POSTS

Day 1

Did you know your dog is most likely to encounter ticks between the months of April and November? Keep your dog safe from Lyme disease by visiting our office today!

Link: [\(Veterinary office appointment link or veterinary clinic website\)](#)

Day 2

Depending on where you live or travel to, your dog could be at a greater risk of Lyme disease. Check out this helpful map to see if Lyme disease is in your area!

Link: <http://www.petsandparasites.org/parasite-prevalence-maps>

Day 3

When it comes to canine Lyme disease, annual vaccination is recommended for continued protection. If your dog hasn't been vaccinated for Lyme disease recently, call us today!

Link: [\(Veterinary contact info page\)](#)

Day 4

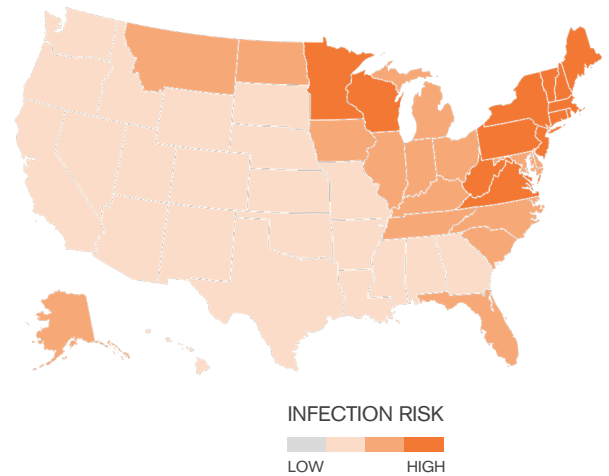
Your dog can be exposed to ticks in many environments, but you can minimize the risk of exposure to ticks. Here's a good how-to on ways to reduce your dog's exposure and protect against tick-borne diseases. A combination of tick control, daily tick checks and vaccination is the best protection.

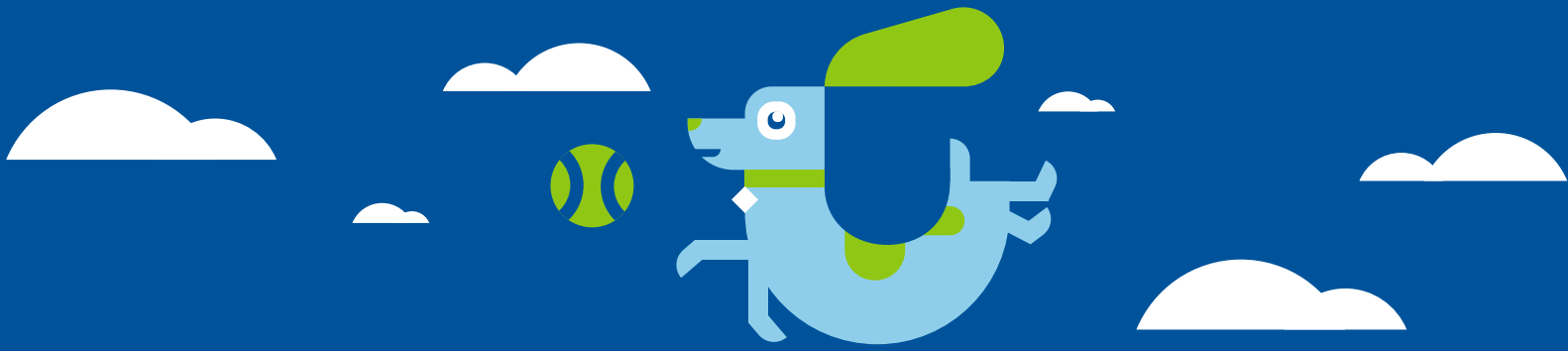
Link: <https://assets-us-01.kc-usercontent.com/ed6e9a4d-b765-0047-ebb4-9e4316043fea/f902fd64-7470-47cb-b6ce-ba5ef5e003e0/Pet%20Owner%20Tick%20Check%20Animated%20Video.mp4>

Day 5

As with many diseases, when it comes to canine Lyme disease, prevention is far easier than diagnosis and treatment. Schedule your dog for an appointment today!

Link: [\(Veterinary office appointment link\)](#)





Day 6

Did you know dogs are far more likely to come into contact with ticks than people? Here are some helpful tips for controlling ticks around the home.

Link: <http://www.petsandparasites.org/dog-owners/ticks>



Day 7

Here's a great interactive map that can help you identify the risk of Lyme disease near your home. Get your dog tested today!

Link: <http://www.petsandparasites.org/parasite-prevalence-maps/>

Day 8

Day 8: A loss of appetite and limping are just a couple of signs your dog may be suffering from canine Lyme disease. If your dog is showing these symptoms – or you think it may have been exposed to ticks – be sure to bring your dog in to see us.

Link: (Veterinary office link)

Day 9

The two largest risk factors for contracting Lyme disease are 1) exposure to infected ticks, and 2) vaccination status. You probably use tick protection, but is your dog up to date on its vaccines? Call us to find out.

Link: (Veterinary office link)

Day 10

Lyme disease is largely preventable through vaccination. Get your dog vaccinated today!

Link: (Veterinary office link)



BONUS POST: Lyme disease is the ONLY tick-borne, vaccine-preventable canine disease.

Always read, understand and follow the label and use directions.

TruCan Lyme, Elanco and the diagonal bar logo are trademarks of Elanco or its affiliates.
© 2022 Elanco or its affiliates. PM-US-21-1963(2)

