

* JAK Inhibitor

Fast acting and flexible for short or long term use. Newer options offer once-daily dosing with no loading dose required, supporting cost conscious care.

* ANTI-IL-31 mAb

Ideal for dogs with pruritus accompanied by little to no inflammation.

* Otitis, if present

Treat otitis externa using cytology to select the most appropriate medication for the causative pathogen. In the absence of cytology, choose a responsible first-line antibiotic, antifungal, anti-inflammatory combination.

If otitis is recurring, assess for underlying allergy including atopy.

* JAK Inhibitors

Target cytokines that signal inflammation (IL2, 4, 6, 13, 31) in addition to those predominantly signaling pruritus (IL31), for fast relief of itch and red, irritated skin.

* Cyclosporine

An effective long-term option for chronic control. Takes 2-4 weeks for maximum efficacy with GI effects common in initial use.

* Corticosteroids

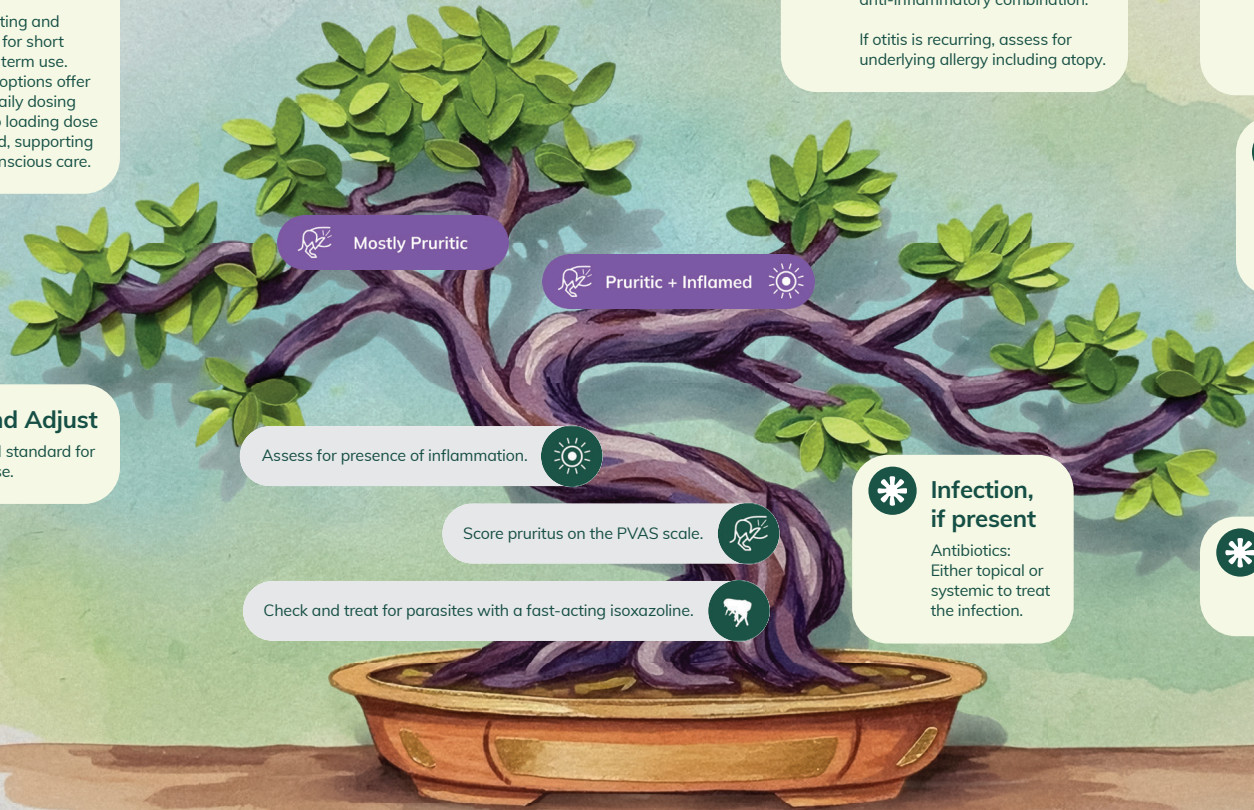
Provides fast, affordable relief for acute flares. Side effects can occur with both short-term and long-term use.

* Monitor and Adjust

PVAS is the gold standard for tracking response.

* Infection, if present

Antibiotics: Either topical or systemic to treat the infection.



* Monitor and Adjust

PVAS is the gold standard for tracking response.

Assess for presence of inflammation.

Score pruritus on the PVAS scale.

Check and treat for parasites with a fast-acting isoxazoline.

Rapid Relief for the Pruritic Dog

A Clinical Guide

ElancoTM

Go Beyond. Make Life Better.

10

Extreme itching (severe/continuous itching)

My dog does not stop itching irrespective of surroundings or commands, and needs to be physically restrained from itching.

9

8

Severe itching (prolonged episodes)

Itching disrupts my dog's sleep, eating, play, and exercise. Itching continues even when my dog is distracted.

7

6

Moderate itching (frequent episodes)

My dog is itchy periodically through the day, but not when eating, playing, exercising, or being distracted. Itching occurs at night when observed.

5

4

3

Very mild itching (occasional episodes)

My dog is only slightly itchier than what I consider normal.

2

1

Normal dog

Itching is not a problem for my dog.

0