



Elanco

**POWERFUL SALMONELLA PROTECTION**

---

**THE ONLY LIVE DUAL-STRAIN VACCINE  
CONTAINING *S. ENTERITIDIS* & *S. TYPHIMURIUM*<sup>1</sup>**

*AviPro*<sup>™</sup>  
SALMONELLA DUO

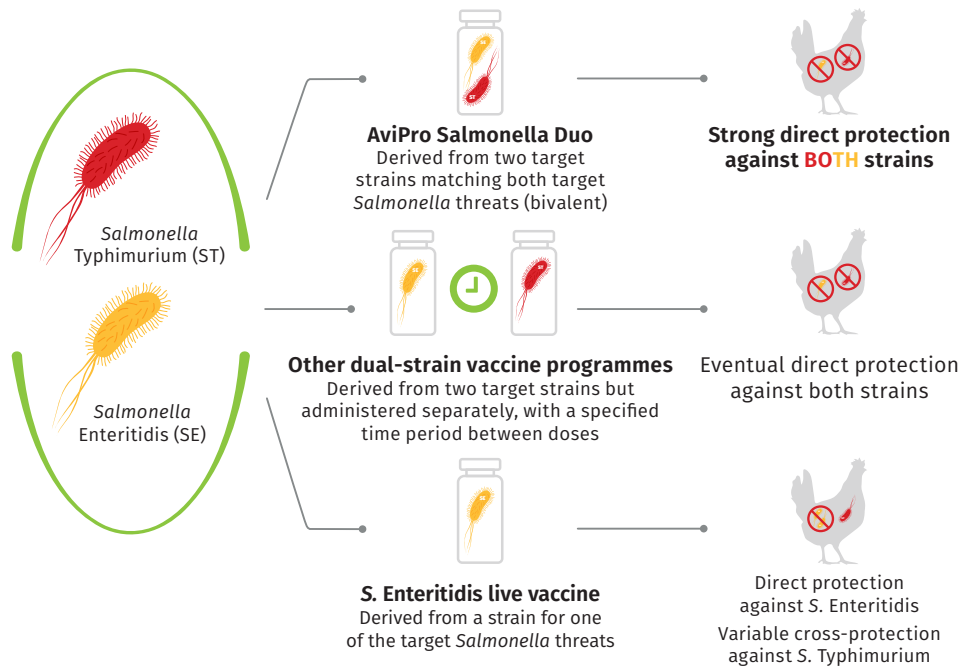
For superior and simplified protection<sup>2</sup>

---

# TRUST AVIPRO SALMONELLA DUO: POWERFUL SALMONELLA PROTECTION

## SINGLE (MONOVALENT) VS. DUAL-STRAIN (BIVALENT) VACCINES: COMPARING DIFFERENT VACCINE PROGRAMMES

Vaccination against one *Salmonella* strain does provide some protection against other strains but immunity is stronger when vaccination is strain specific.



Vaccination with a double strain (bivalent) vaccine provides superior protection against both *S. Enteritidis* & *S. Typhimurium*, compared to single strain vaccines.<sup>3-7</sup>

↓ **ORGAN CONTAMINATION<sup>2,3</sup>**

↓ **SHEDDING<sup>2</sup>**

Birds vaccinated with **AviPro Salmonella Duo** vs. single strain vaccine<sup>3</sup>

Up to **60%** lower organ bacterial counts



	Single strain vaccine programmes	Other dual strain vaccine programmes	AviPro Salmonella Duo
Both strains in a single dose	X	X	✓
Administration on the same day	✓	X Strains compete if administered together, risking the efficacy of the second vaccination	✓ No strain competition, maintaining efficacy
Simple administration programme	✓	X Must ensure adequate time gap* between doses	✓ Both strains are administered together
Early, reliable protection against both regulated strains	X Direct protection against <i>S. Enteritidis</i> . Variable cross-protection against <i>S. Typhimurium</i>	X Potential for immunity gap while waiting for the second strain to be administered	✓ Protection against both strains from Day 1 <sup>1</sup>

### CO-FERMENTATION: THE PROCESS BEHIND THE POWER

This unique process to manufacture AviPro Salmonella Duo, ensures:

- ◆ Both strains are present equally
- ◆ Strains do not compete
- ◆ Reduced labour costs

Both strains can be administered together, while maintaining vaccine efficacy.

**Just 3 doses per vaccine course**, rather than the 6 doses required by other dual strain vaccine programmes.

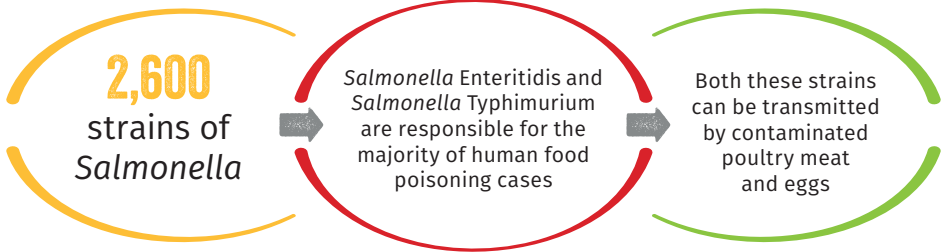
AviPro Salmonella Duo is the **ONLY** live dual-strain vaccine containing *S. Enteritidis* & *S. Typhimurium*<sup>1</sup>

- ◆ Superior, direct protection<sup>2</sup>
- ◆ No strain competition (other vaccine programmes using SE and ST strains separately)
- ◆ Simplified administration programme – both strains administered together in the same dose
- ◆ Protection from Day 1

<sup>1</sup>According to manufacturer's SPC



# DOUBLE TROUBLE FOR HUMAN HEALTH AND POULTRY PRODUCERS



Effective protection against both strains is essential for food safety and protecting human health.

## SALMONELLA VACCINE OPTIONS:

### SINGLE STRAIN (MONOVALENT) VACCINES

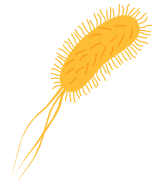
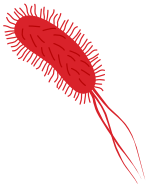
Variable cross protection<sup>4</sup>

### OTHER VACCINE PROGRAMMES COVERING SE AND ST STRAINS SEPARATELY

Stronger protection<sup>4</sup>  
Increased administration complexity  
(6 vaccine doses required per course)<sup>4</sup>

## AVIPRO SALMONELLA DUO - THE ONLY LIVE DUAL-STRAIN VACCINE CONTAINING *S. ENTERITIDIS* & *S. TYPHIMURIUM*<sup>1</sup>

- ◆ Direct, superior protection against both regulated strains<sup>2</sup>
- ◆ NO strain competition
- ◆ Simplified administration programme – both strains administered together in the same dose (Just 3 doses per vaccine course = reduced labour costs compared to other vaccine programmes covering SE and ST strains separately which require 6 doses)



- ◆ Early protection, from day 1<sup>1</sup>
- ◆ Easy administration in drinking water
- ◆ Excellent vaccine safety profile

**References:** 1. SPC Elanco Avipro Salmonella DUO 2016 (v1.0) 2. Koerich P IPPE 2023 2023 1 (v1.0) 3. Desloges N LOHMANN INFORMATION INTERNATIONAL 2010 22 (v1.0) 4. Methner U Friedrich-Loeffler Inst 2007 (v1.0) 5. Barrow PA Salmonella in Domestic Animals 2000 323 (v1.0) 6. Hassan JO et al Infect Immun 1996 938 (v1.0) 7. Hassan JO et al Infect Immun 1994 5519 (v1.0)

Avipro Salmonella Duo contains: Live attenuated *Salmonella* Enteritidis bacteria, strain Sm24/Rif12/Ssq, min.  $1 \times 10^8$  CFU\* and max.  $6 \times 10^8$  CFU\* Live attenuated *Salmonella* Typhimurium bacteria, strain NaI2/Rif9/Rtt, min.  $1 \times 10^8$  CFU\* and max.  $6 \times 10^8$  CFU\* \*CFU – colony forming units. Legal Category: POM-V. Advice should be sought from the medicine prescriber prior to use. Prescription decisions are for the person issuing the prescription alone. **Use medicines responsibly. [www.noah.co.uk/responsible](http://www.noah.co.uk/responsible).**

Elanco UK AH Limited, Form 2, Bartley Way, Bartley Wood Business Park, Hook RG27 9XA. Telephone: 01256 353131. Email: [elancouk@elanco.com](mailto:elancouk@elanco.com)  
For further information, consult the product SPC. Avipro, Elanco and the diagonal bar logo are trademarks of Elanco or its affiliates.

© 2024 Elanco or its affiliates. PM-UK-24-0425 | September 2024